

## **SMARTS ALUSPACE SLIDING DOORS.**



**Please read the complete set of instructions before starting installation to familiarise yourself with the stages of construction.** These instructions cover the fitting of the above doors complete with track into a new or existing internal opening.

Before proceeding, you will need to check your new door is correct size to fit into intended aperture.

**Do not remove your old frame until you have confirmed all the points below.**

Carefully open the packs supplied and check the contents against the included list.

For future use and adjustment requirements please retain any assembly instructions.

Structural openings to be free of any dirt and debris.

It is important that you check the level and plumb when installing the frame.

### **Delivery Check List**

- Sliding sash(es) / Fixed Sash (es)
- Top track at correct length with end caps
- Box section for fixed sash (es) if required
  - Wedge Gasket / Glass units
  - Buffer stops, Bottom Guides
- Hanging Brackets (for face fix only)

**Notes for guidance - Please read.**

**\*\*\* Fitting these doors plumb and level is of paramount importance. \*\*\***

**The doors may not operate correctly if you do not:**

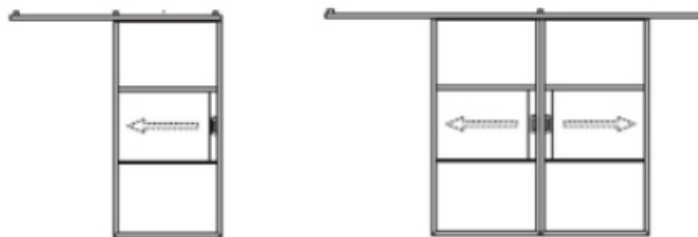
- Fit the top track level.
- Fit the fixed sash/sidelight plumb in all planes.
- Over-tighten fixing screws against packers.

Place your door on a ground sheet to protect from damage, remove all packaging and check that you have all hardware, glass, and all items from the checklist.

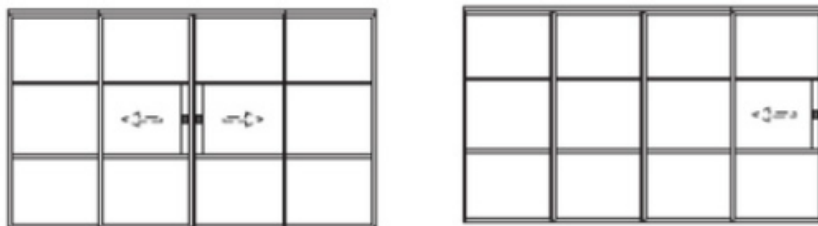
**Determine the type of door and fitting process:**

How you fit the track and doors depends upon which style you have purchased. If you have sliding doors only with an extended track, this will need to be face fixed on the outer part of the wall with the track extending to each side of the wall to enable the door to slide open. If you have purchased a patio with fixed lights to one or both sides, this will need to be fixed inside the reveal to allow the fixed doors/sidelights to be fixed into the reveal. You will need to prepare the recess to suit the method you are going to use.

**Face Fixed**

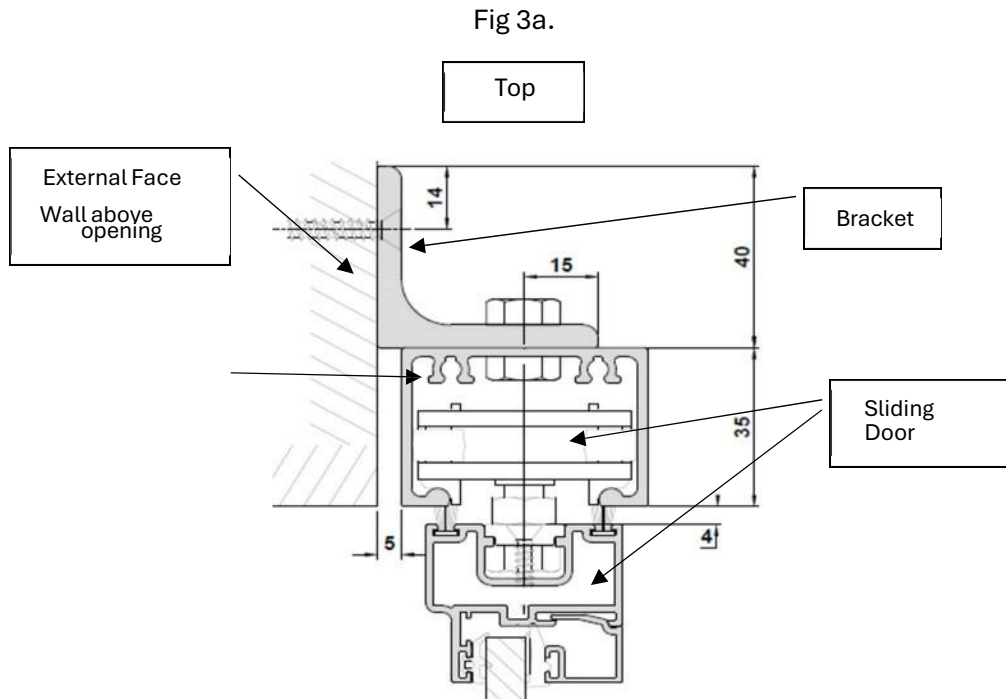


**Recess Fixed**



## **Fitting the top track**

**3a – Face Fixing** - If you are face fixing, measure out where the track will need to sit and mark out where the bracket needs to be fitted according to the dimensions in **Fig 3a**.



Fix the brackets to the top track with the fittings supplied. Drill and fit suitable fixings to the wall then fix the bracket with the top track to the wall taking care to centralise the top track with the door opening.

**Check with a spirit level that the track is level.**

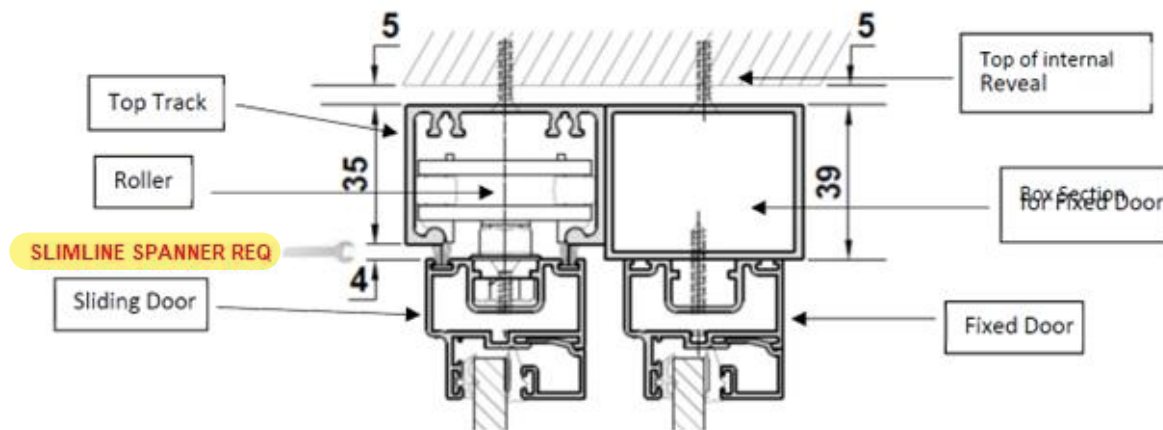
**3b – Fitting into the recess** - If you are fixing into the recess/reveal, you will need to measure out the fixing points as per **Fig 3b**. Please note, you will need someone to help position the track and doors while fitting.

Next, slide the rollers into the top track, then fix the top track to the recess as shown below using suitable fixings. The doors will need to be moved along the track to enable enough fixings through the head of the track.

**Check with a spirit level that the track is level and if not, this will need to be packed.**

**Fig 3b.**

**Next, fit the box section adjacent to the top track and fix upwards into the reveal.**



### **Fitting the fixed doors.**

If you have fixed doors, offer the door up to the reveal and under the box section. The door should sit between the floor and box section comfortably and butt up to the inside of the reveal.

Fix the fixed door into the box section and the wall using suitable fixings, and through to the floor. Make sure that the door is sat square and plumb and pack out where needed to achieve this. Repeat for any other fixed doors.

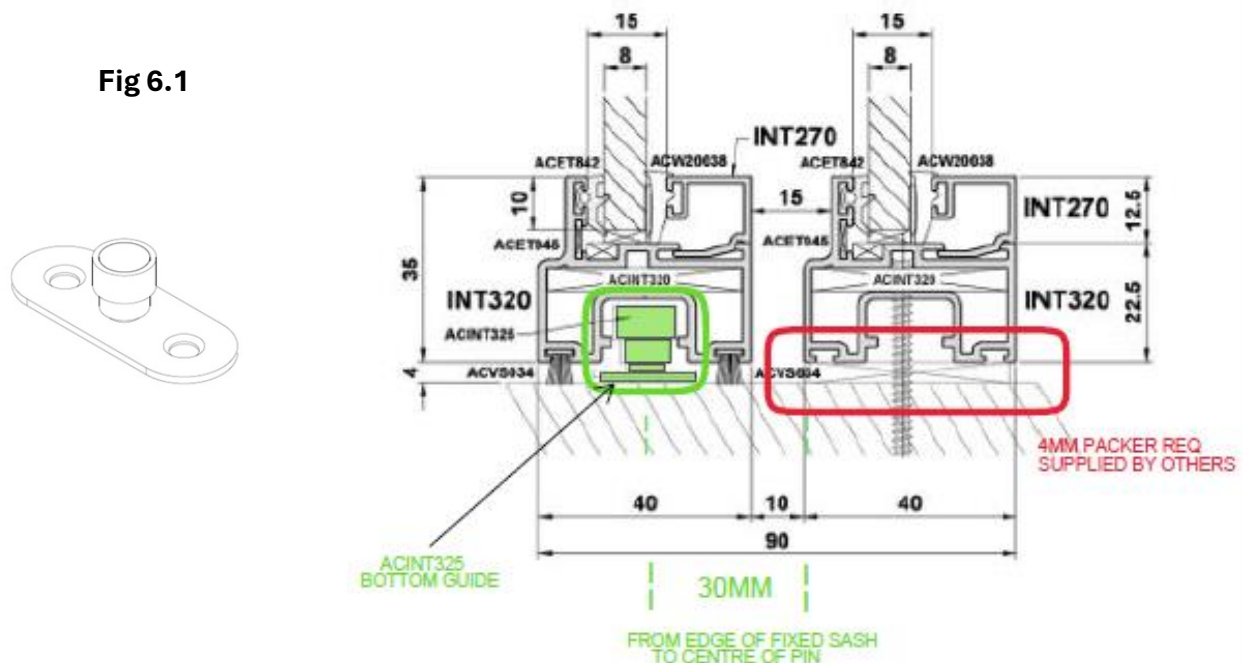
Please make sure that the side of the door with the interlock (the wool pile will be attached) sits next to where the sliding door will be. The side of the door without wool pile will fix into the wall.

## Fitting the sliding doors.

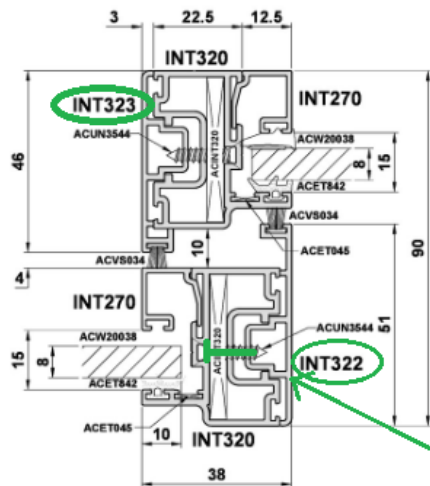
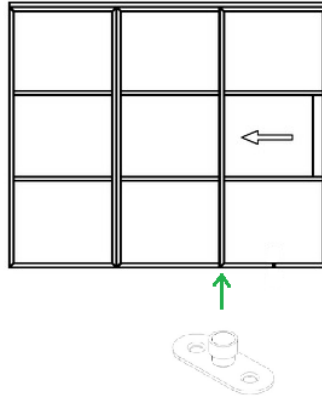
**Face Fixing Doors** – If you are face fixing the door, slide the rollers which into the top track. Slide the doors fully along the track to make sure that nothing is catching and that the door moves freely. There will be a hole in the door sash below where the roller is which can be used to access the adjustments on the roller from below, if the door needs to be lowered or lifted for a better fit. Once you have any adjustments complete and are happy with the fit, attach the top track end caps which will have been wrapped to the track when delivered.

**Fitting into the recess** – If you are fitting the door into the recess/reveal, adjust the rollers as per above and make sure that the doors slide freely. The wool pile for the bottom of the sliding doors can be fitted or taken out depending on your preference.

**Fitting the Door Guides** - In the package attached to the top track will be sliding door bottom guides (1 per sliding door) **Fig 6.1**



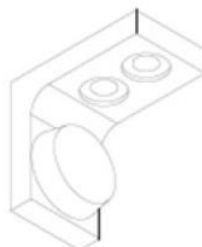
These need to be fixed into the floor as a guide for the sliding doors as per Fig 6.2 below.  
These will need to be fitted centre of where the two interlocks meet face on.



INT322 / INT323 PLATES  
TO BE REMOVED  
REMOVE SCREWS FROM INTERNAL GLAZING  
CHANNEL

**Fitting the Buffer Stops-** in the packaging wrapped to the top track there will be buffer stops **Fig 7.1** below.

**Fig 7.1**



These need to be fitted to the end of the top tracks where the sliding doors need to stop and to fall in line with bottom floor guide position as per above.

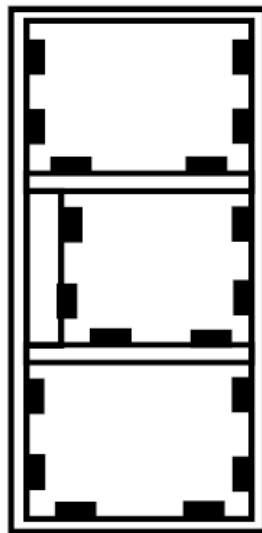
## Glazing

Close the doors. Decide which door to glaze first then remove the beads noting the position of each bead (top, left, right and bottom).

Fit the E-Gasket to the frame side of the sash in pieces, not in a continuous length. Trim gaskets to avoid overlapping which will cause difficulty when glazing. **Fig 8.5**

Add the glass packers as per the diagram **Fig 8.3**. **Please note, the configuration of packers below is for this system only and not to be used in other door systems.**

**Fig 8.3**



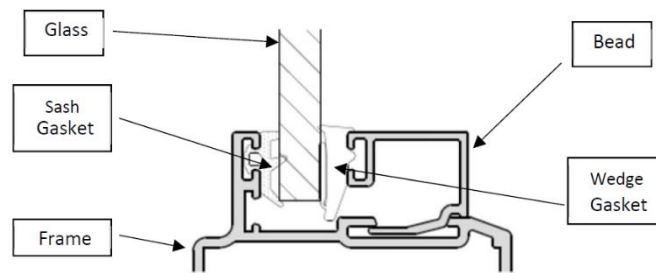
**Note: It is essential that the doors have the glass installed with the glazing packers fitted in the correct positions as shown in the diagram.**

**Failure to fit the packers tightly in the correct place will prevent the doors from operating correctly.**

Taking great care, one unit at a time, fit the glass and pack appropriately. When the glass is fully packed-out re-bead, placing the beads in their original locations.

Once complete, fit the wedge gasket into place in between the beads and glass. This needs to be done in pieces, not in a continuous length. Leave the gaskets slightly oversized to avoid shrinking. Continue for the full sash. **Fig 8.5**

**Fig 8.5**



**TIP:** The wedge gasket will be tight to insert so it is beneficial to use some lubricant, ie silicone spray or washing liquid. It can also help if you wedge glazing packers between the bead and the glass. This helps compress the seal on the door behind the glass giving you more room to get the wedge gasket in. The use of a gasket glazing wheel also help. The gasket needs to be fitted tight against the glass. Glaze the remainder of the doors.

### **Check Door Operation**

Once the door is fixed into place and the sashes glazed correctly, check the operation of the door to make sure it closes and opens correctly.

**To finish off, fill any gaps with silicone and/or architrave.**

**Maintenance Guidelines. - These guidelines must be adhered to, or you will invalidate your guarantee.**

- a) Products should be washed down periodically with a non-abrasive cleaner and warm water.
- b) To maintain the mechanisms, ensure they are always kept clear of obstruction like builders' rubble, plaster residue and other objects. All Moving parts are to be periodically lubricated using a light, acid free lubricant to ensure continual ease of operation.