



SignatureDOORS

The next generation ALUMINIUM composite door

Smart Systems Ltd

Signature Range Doors

HARDWARE, CLEANING & MAINTENANCE
GUIDE



Hardware & Furniture

Standard Lift Lever Lock

Key Features of Cam Lift Lever Lock are:

- Sturdy steel hook bolts
- Nickel-plated latch for smooth closure
- Rugged main deadbolt
- Adjustable compression cams with brass rollers
- Classic lift lever operation
- Adjustable (+/- 2mm) latch keep
- PAS24:2022 compliant
- 35mm lock backset

Operation:

Lift handle lever to throw hooks and compression cams into locked position. Turn key or thumbturn to lock.

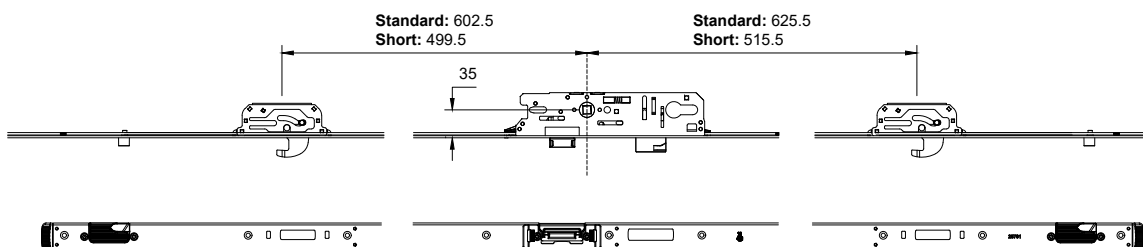


		Lock	Keep	
			LH	RH
Size	Short	ACUL275	ACUL270	ACUL271
	Standard	ACUL379	ACUL371	ACUL372

IMPORTANT NOTE:

Door height \geq 2019mm use Standard locks
Door height $<$ 2019mm use Short locks

Details



Spindle Height: 1050mm from FFL
Cylinder Height: 958mm from FFL

Premium Lift Lever Lock

Key Features of Premium Lift Lever Lock are:

- Sturdy steel hook bolts
- Bank Vault style dual round security bolts
- Adjustable (+/- 2mm) locking box keeps
- Adjustable (+/- 2mm) latch keep
- Classic lift lever operation
- PAS24:2022 compliant
- 35mm lock backset

Operation:

Lift handle lever to throw hooks and pins into locked position. Turn key or thumbturn to lock.

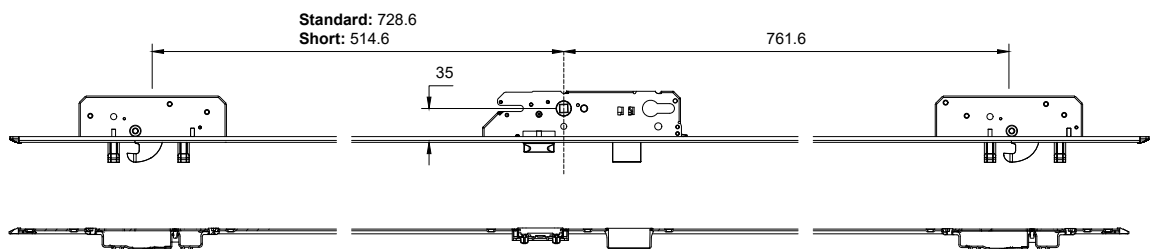


		Lock	Keep	
			LH	RH
Size	Short	ACUL376	ACUL391	ACUL393
	Standard	ACUL298	ACUL288	ACUL289

IMPORTANT NOTE:

Door height \geq 2019mm use Standard locks
Door height $<$ 2019mm use Short locks

Details



Spindle Height: 1050mm from FFL
Cylinder Height: 958mm from FFL

Slam Lock

Key Features of Slam Lock are:

- DuoSecure - Increased Security
- Sturdy steel hook bolts
- Enhanced Security Pin
- Adjustable (+/- 2mm) locking box keeps
- Adjustable (+/- 2mm) latch keep
- Automatic locking on close
- PAS24:2022 compliant
- 35mm lock backset

Operation:

On shutting door, hooks will automatically throw into locked position (activated by the magnet on the keep). Use Key or Thumbturn to throw deadbolt. Cylinder and/or Handle operation is required to unlock door.

11mm strong latching bolt keeps the door in position and ensures contact pressure

the hook bolt ensures security

The wide lock box allows for smooth operation of hook bolt

Tamper proof and dirt resistant magnetic release



IMPORTANT NOTE:

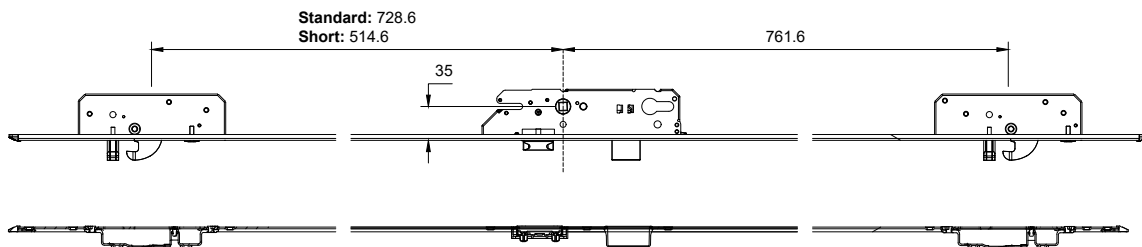
Each Slam Lock Keep will require 2no ACUL286 - Release magnet

Size		Lock	Keep	
			LH	RH
	Short	ACUL386	ACUL391	ACUL393
	Standard	ACUL285	ACUL288	ACUL289

IMPORTANT NOTE:

Door height \geq 2019mm use Standard locks
Door height $<$ 2019mm use Short locks

Details



Spindle Height: 1050mm from FFL
Cylinder Height: 958mm from FFL

Split Spindle Lock

Key Features of Split Spindle Lock are:

- Sturdy steel hook bolts
- Nickel-plated latch for smooth closure
- Rugged main deadbolt
- Adjustable compression cams with brass rollers
- Classic Split Spindle operation
- Adjustable (+/- 2mm) latch keep
- PAS24:2022 compliant
- Key required to open door from outside.
- 35mm lock backset

Operation:

Lift handle lever/pad to throw hooks and compression cams into locked position. Key required to open door from outside. Turn key or thumbturn to lock.

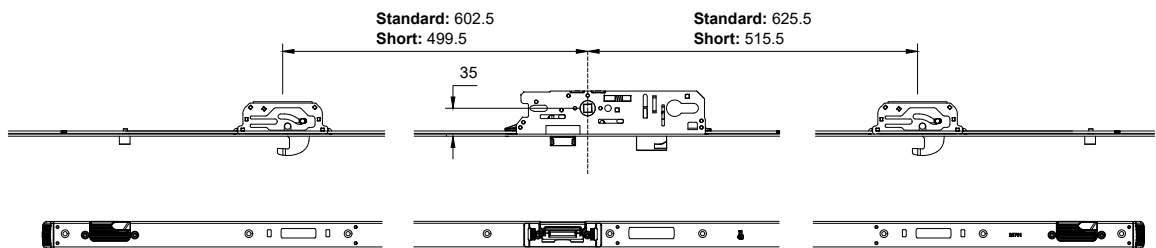


IMPORTANT NOTE:
Each Split Spindle Lock will require
1no ACUL414 - Split Spindle Kit

		Lock	Keep	
			LH	RH
Size	Short	n/a	n/a	n/a
	Standard	ACUL413	ACUL371	ACUL372

IMPORTANT NOTE:
Door height \geq 2019mm use Standard locks
Door height $<$ 2019mm use Short locks

Details



Spindle Height: 1050mm from FFL
Cylinder Height: 958mm from FFL

Heritage Lock

Key Features of Heritage Lock are:

- DuoSecure - Increased Security
- Sturdy steel hook bolts
- Enhanced Security Pin
- Adjustable (+/- 2mm) locking box keeps
- Adjustable (+/- 2mm) latch keep
- Automatic locking on close
- PAS24:2022 compliant
- Higher euro cylinder location.
- 35mm lock backset

Operation:

On shutting door, hooks will automatically throw into locked position (activated by the magnet on the keep). Use Key or Thumbturn to throw deadbolt. Cylinder operation is required to unlock door.

11mm strong latching bolt keeps the door in position and ensures contact pressure

the hook bolt ensures security

The wide lock box allows for smooth operation of hook bolt

Tamper proof and dirt resistant magnetic release



IMPORTANT NOTE:

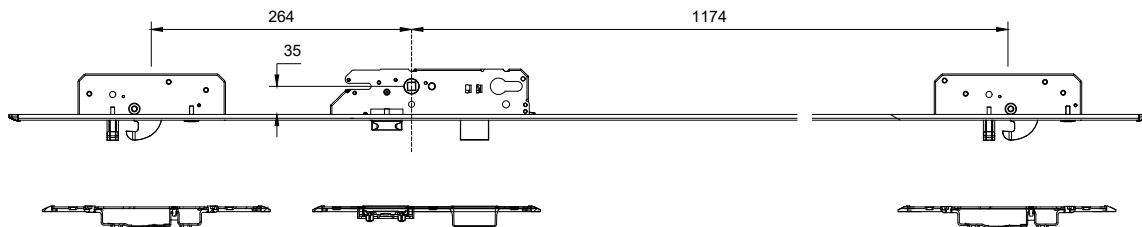
Each door fitted with Heritage lock will require 2no ACUL286 - Release Magnet

	Lock	Keep	
		LH	RH
Size	Short	n/a	n/a
	Standard	ACUL415	1no ACUL416 2no ACUL418
			1no ACUL417 2no ACUL419

IMPORTANT NOTE:

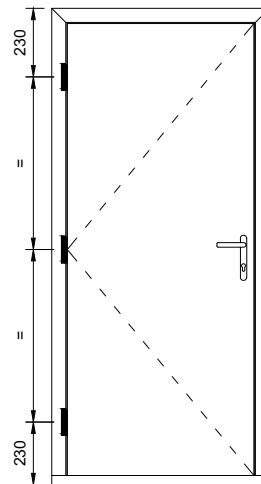
Door height \geq 1985mm use Standard locks
Door height < 1985 mm **no lock available**

Details



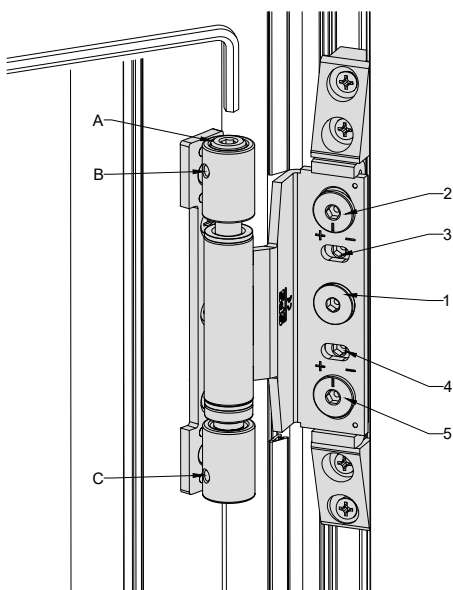
Spindle Height: 1500mm from FFL
Cylinder Height: 1408mm from FFL

Hinge Data



PAS24:2022	Materials	Corrosion Resistance UNI EN 1670	Load Capacity Per Hinge
Yes	Steel & Zamak	Minimum 1000 hours	35kg

Hinge Adjustment



Horizontal Adjustment ($\pm 3\text{mm}$)

- Unscrew Screw 1 by three turns
- Tighten or loosen Grub Screws 3 and 4 with a 4mm Allen Key
- Tighten Screw 1

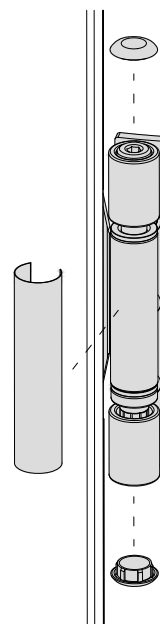
Gasket Pressure Adjustment ($\pm 2\text{mm}$)

- Unscrew Screw 1 by three turns
- Turn Screws 2 and 5 in direction of + or - to have more or less gasket pressure.
- Tighten Screw 1

Height Adjustment ($-2\text{mm}/+6\text{mm}$)

- Loosen Grub Screws B and C
- Turn Pin A
- Tighten Grub Screws B and C

INSTALL END CAPS AND COVERS AS SHOWN



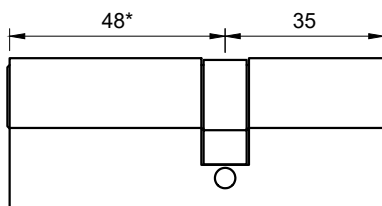
Cylinders

		Door Configuration	
		Open In	Open Out
Cylinder Operation	Key / Key	ACCY4835NKS3	ACCY3548NKS3
	Key / Thumbturn	ACCY4835NKTTTS3	ACCY3548NKTTTS3

OPEN IN

ACCY4835NKS3

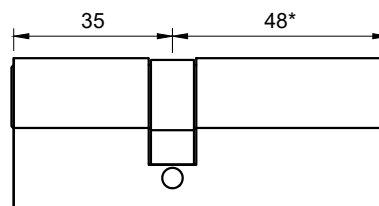
← OUTSIDE



OPEN OUT

ACCY3548NKS3

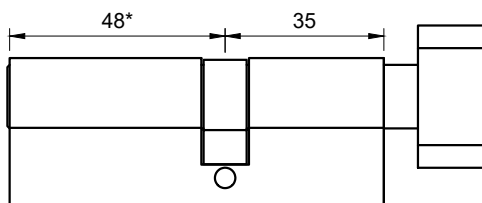
← OUTSIDE



OPEN IN

ACCY4835NKTTTS3

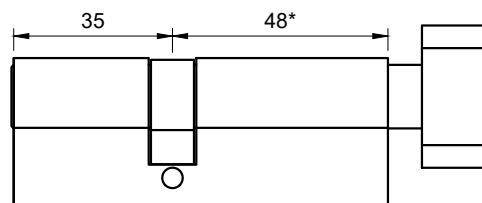
← OUTSIDE



OPEN OUT

ACCY3548NKTTTS3

← OUTSIDE



Security Rating	Spare Keys	Security Features	Extras*
BSI 3* Kitemarked Sold Secure Diamond Standard SBD Approved	3	Anti-Bump Anti-Pick Anti-Drill Anti-Tilt Anti-Snap	1hr Fire Rated Easy Turn Helix Thumbturn Standard Keyway for easy spares £4000 supplier guarantee

*Product size and brand are subject to change based on availability. All cylinders will be 3star rated, extras may vary depending on the supplier.

Site Survey & Installation

Site Survey

THIS IS A GUIDE ONLY.

Survey should always be conducted by competent person.
We do not accept liability for inaccurate surveys.

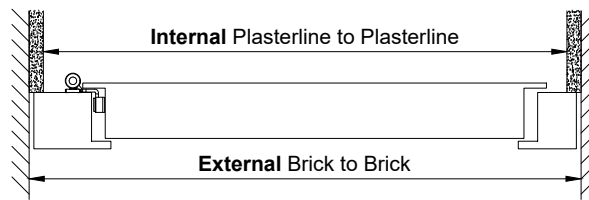
Measure both Internal and External Dimensions

Width measure at 3 points; top, middle and bottom. Take the smallest measurement and deduct 10mm.

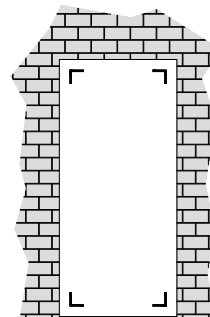
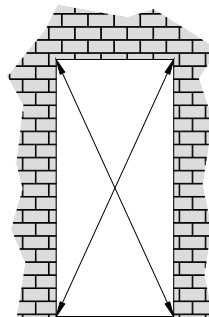
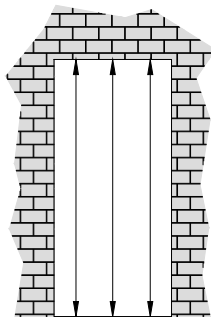
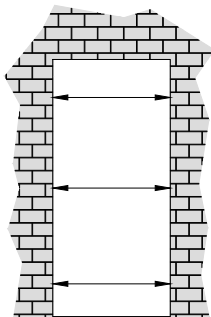
Height measure at 3 points; left, middle and right. Take the smallest measurement and deduct 10mm.

Diagonal measure at 2 points; bottom left corner to top right corner and bottom right corner to top left corner. These dimensions should be within 5mm of each other.

Internal dimensions should be taken from plasterline to plasterline.



External dimensions should be taken from brick to brick and to below any existing cills (if cill is being replaced).



Extra Considerations

Considerations when conducting site survey:

- Is the opening level?
- Is the opening square?
- Are the walls plumb?
- Is a cill required?
- Is the reveal depth adequate?
- Are any specific fixings or fasteners needed?
- Is there sufficient clearance for the hinges to operate?
- Is an add on required?
- Will the door operate without any obstructions?
- Is the clear opening suitable for the customer's needs?
- Are trims needed to complete the installation?
- Does this door need to be DDA compliant?
- Does the door require a cill?
- Is the colour suitable for this location?

Installation

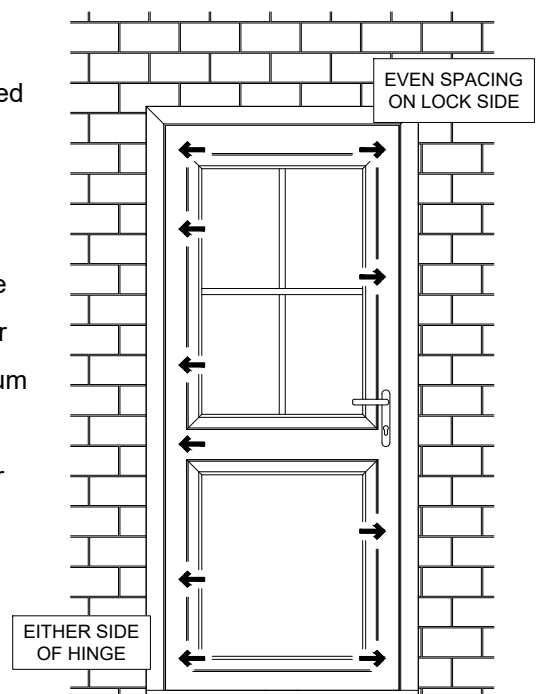
To ensure satisfactory operation Doors should only be fitted by experienced installers using appropriate tools and equipment. Failure to follow the steps in this guide may result in unsatisfactory operation.

IMPORTANT:

DO NOT OPEN THE DOOR UNTIL IT IS HELD SQUARE IN THE APERTURE USING AIR BAGS. DOORS ARE A SOLID 'SLAB' DESIGN THAT CANNOT BE 'TOE & HEELED'. THE CORRECT INSTALLATION OF THE OUTER FRAME IS CRITICAL TO THE OPERATION OF THE DOOR

1. Offer the Door into the aperture.
2. Place an air bag on the hinge side at the bottom of the outer frame.
3. Place an air bag on the lock side at the top of the outer frame.
4. 'Square up' the hinge side by deflating/inflating the air bag and using a spirit level/laser level.
5. Using the air bag on the lock side adjust the Door until there is a 5mm gap all the way the around sash, from edge of sash to outer frame.
6. Place air bags into top hinge side and bottom lock side. Inflate air bags to hold the Door in securely in place.
7. Open the sash and remove the lock keep.
8. Check that the hinge jamb is level. Fix the hinge jamb through the aluminium (DO NOT fix through the polyamide). **Please Note:** ensure the first fixing is located within 50mm of the top hinge. All fixings should be in accordance with British Standard BS8213-4:2016.
9. Before fixing the lock jamb confirm the Door opens and closes satisfactorily. If not, use the air bags to adjust the alignment of the lock jamb with the sash. Once the Door operates correctly fix the lock jamb through the aluminium (DO NOT fix through the polyamide).
10. Re-fit the lock keep onto lock jamb. Test to confirm door latches & locks satisfactorily. If the Door operates correctly then final fix the lock keep.

EXAMPLE FIXING LOCATIONS



De-Glaze Mouldings

Recommended:

- 2 people

Method:

1. Carefully run a sharp blade around the edges of both internal and external mouldings, loosening the silicone.
2. Remove wedge gasket from internal moulding. Using a glazing spade, apply levering action to push the internal moulding away from the door skin. Repeat this process at multiple locations around the perimeter. As a result, the internal moulding should detach. Set this aside.
3. Remove the machine screws from the glass retainers, ensuring the external moulding and glass are supported to prevent dropping. For PAS24:2022, drill out rivets and remove anti de-glaze clips by pushing them toward the centre of the glass before removal.
4. Set aside the external moulding and glass unit.
5. Remove any remaining silicone or tape from the door skins and moldings, taking extra care to avoid scratching or damaging these components.

Re-Glaze Mouldings

Recommended:

- 2 people
- door to be horizontal on trestles

External Gasket	Internal Gasket
ACVG31	ACVG340N

Method:

1. Place appropriate silicone along the perimeter channel of the external moulding. Suitable watertight seal should be created.
2. Fit the external moulding to the door slab opening. For PAS24:2022, install anti de-glazing clips on one side of the slab and opposite side of the glass. Use a glass sucker to angle the glass into the slab clips, then lower into place and align holes. Push clips to engage behind the aluminium skin, install remaining clips, and fix in place.
3. Position the glass using a glazing spade and slide glass retainers underneath using cut outs in foam core and aluminium skin as guide. Fasten the retainers to the rivnuts in the external moulding using machine screws. Ensure that the lip of each retainer rests over the door skin. **Be cautious not to overtighten the screws please use lowest torque setting.** Repeat this process in at least two opposite corners to hold the external moulding and glass in position.
4. Now that the glass is secure, proceed to install the remaining glass retainers. Make any necessary adjustments and pack the glass as required.
5. Apply silicone to the perimeter channel of the internal moulding.
6. Position the internal moulding on top of the glass retainers and firmly push it until it snaps into place.
8. Wipe away any excess silicone on door skins.
9. Fit wedge gasket to internal moulding ensuring finish is ripple free and straight.

Maintenance

Hardware

The hardware on your door is something you and your visitors touch everyday. Keeping them clean and tarnish free is an essential part of looking after your door.

1. Using a non-abrasive cloth and warm light detergent, ensure that all foreign contaminants are removed. Rinse with clean water.
2. Dry the hardware immediately to avoid streaks. Polish and buff the hardware with a soft, lint free cloth to shine.

Important

- Do not use acid-based cleaning products or any other aids.
- Do not use an abrasive cloth to wipe away excess oil. This will damage the surface finish.

To maintain the appearance of any stainless steel hardware we recommend you use only the Stainless Steel Care Kit included with your door. Before you begin, carefully mask the powder coated finish of your door's sash using either masking tape or decorators tape.

1. Use a small amount of Smart Stainless Steel Cleaning Fluid on a micro-fibre cloth to clean the hardware. Ensure the product is spread evenly and remove any excess with a clean cloth (highly concentrated do not over apply).
2. Use a small amount of Smart Care Oil on a micro-fibre cloth and wipe the oil in the direction of the stainless steel grain. Remove any excess with a clean cloth. To finish, softly buff the oil to a sparkling finish with a clean micro-fibre cloth.

Lock Maintenance

Knowing how to maintain your locks properly can help keep your home and family safe. Regular cleaning and lubrication every 3-6 months is recommended to keep your locks operating like new and will also help prevent freezing in cold weather.

1. It is important that the lock points are free of dirt and debris as this can impede the smooth operation of your lock. Use a small brush (a paint brush is ideal) to loosen any debris.
2. Place a protective sheet under the door, beneath the lock to protect your floor or carpet.
3. Check all movable and locking components for correct operation
4. Lightly grease all protruding latching and bolts. **DO NOT USE OIL.** Use acid-free multi-purpose grease e.g. Fuhr contact grease (art. no. VNZ80077).
5. Check all locking points for wear and tear and a firm fitting.

6. Depending on usage, fixing screws may have to be tightened or replaced if damaged.
7. Only use cleaning products that do not affect hardware anti-corrosion coatings.

Important

- Take care when applying to not get cleaning products or grease on powder coating.
- Oil based products, for example WD40, should not be used on locks. This works as a degreaser and will impede performance and may even damage lock mechanism.
- Take good care of your keys, a damaged key can cause damage to your cylinder.

Threshold & Seals

The build up of dirt and debris in a threshold can impede the performance and operation of your new door. Therefore we recommend cleaning your threshold every 6 months.

1. It is important that the door's threshold is clean and free from stones and any debris (leaves, accumulation of dirt etc) as this can impede the smooth operation of your door and can affect drainage.
2. Use a small brush (a paint brush is ideal) to loosen any debris from the threshold and then using a vacuum, remove the dirt that has been collected.
3. Ensure that the two drainage slots at either end of the threshold are not blocked and are free of debris.
4. Use a small brush to loosen any debris from the drainage slots and then vacuum away the dirt.

Fitted around the perimeter of the door sash and frame are rubber seals. To keep the seals in good condition to prevent drafts & loss of heat from your home we recommend cleaning the rubber seals every six months.

1. To clean the rubber seals, gently run across them with a light soapy solution and non-abrasive cloth.

Important

Do not use solvent-based cleaning products on the seals. We recommend you use a silicone-based spray on the seals twice a year (or more regularly if needed).

Paint

Doors are low maintenance and easy to take care of. Wiping your door and frame with fresh water and a light detergent once a month will help to prevent the build up of dirt. To preserve a stunning look all year round follow our simple guide.

Do Not Use:

- Any type of heavy duty household cleaner, as this may damage the powder coat finish of the frame and door surface
- Solvent based cleaning fluid (such as cellulose thinners or nail polish remover) these will cause irreversible damage to the door.
- Abrasive or aggressive materials (such as wire wool, sand paper, scouring pads or abrasive cloths) or tools (such as scrapers or knives) as this will damage the surface finish.

1. If your house is located in a marine or coastal environment, the external surface of the doors and frames should be washed down with fresh clean water on a weekly basis to remove any salt deposits that can build up.
2. It is preferable to clean the metal when shaded. Do not attempt to clean surfaces when heated by the sun, as it is possible that chemical reactions will be highly accelerated and cause damage to the surface. Also avoid cleaning in freezing temperatures.
3. For harder to clean smudges and smears, we recommend using Loctite 7070 cleaner.

Glass

Glazed doors are a beautiful addition to a home. But as they are exposed to wind, rain, fingerprints and marks, occasionally they need a good clean. Follow our simple guide to keep your glazing clean and smudge free.

1. Using a non-abrasive, window cleaning solution and a soft clean cloth or sponge gently wipe away any dirt on the glazing.
2. Rinse the glass immediately with clean water to remove the cleaning solution
3. After you have finished cleaning the glass, wipe away any cleaning solution from the glazing's gaskets, seals and frame with clean water.
4. After you have finished cleaning the glass, wipe away any cleaning solution from the glazing's gaskets, seals and frame with clean water.

Important

- Do not use razor blades or scrapers to clean the glass; this carries a high risk of causing irreparable damage to the glass.
- Do not use acid-based cleaning products or any other aids.

Please note:

If 3rd party glass unit is used, please follow the cleaning and maintenance guide from supplier. Take special care not to use any cleaning or maintenance products that may damage other aspects of door.

Notes

[illegible]A full-page sheet of white graph paper with a light gray grid. The grid consists of small squares, approximately 10 units wide by 10 units high. There are no margins or additional markings on the page.